



Water Features Guide

A Dobbies.com free guide



it's in our nature
Dobbies.com

Contents

Water features

Water feature plans	3
How to make a water feature	5
Garden fountains	7
Garden waterfalls	9
Contemporary water features	10
Indoor water features	12
Outdoor water features	13
Water feature pumps	15
Water feature care	17



[Bermuda Sophia Statuette Water Feature](#)
£199.99



[Henri Studio Falling Diamonds Fountain](#)
£799



[Bermuda Mountain Spring Water Feature](#)
£184.99

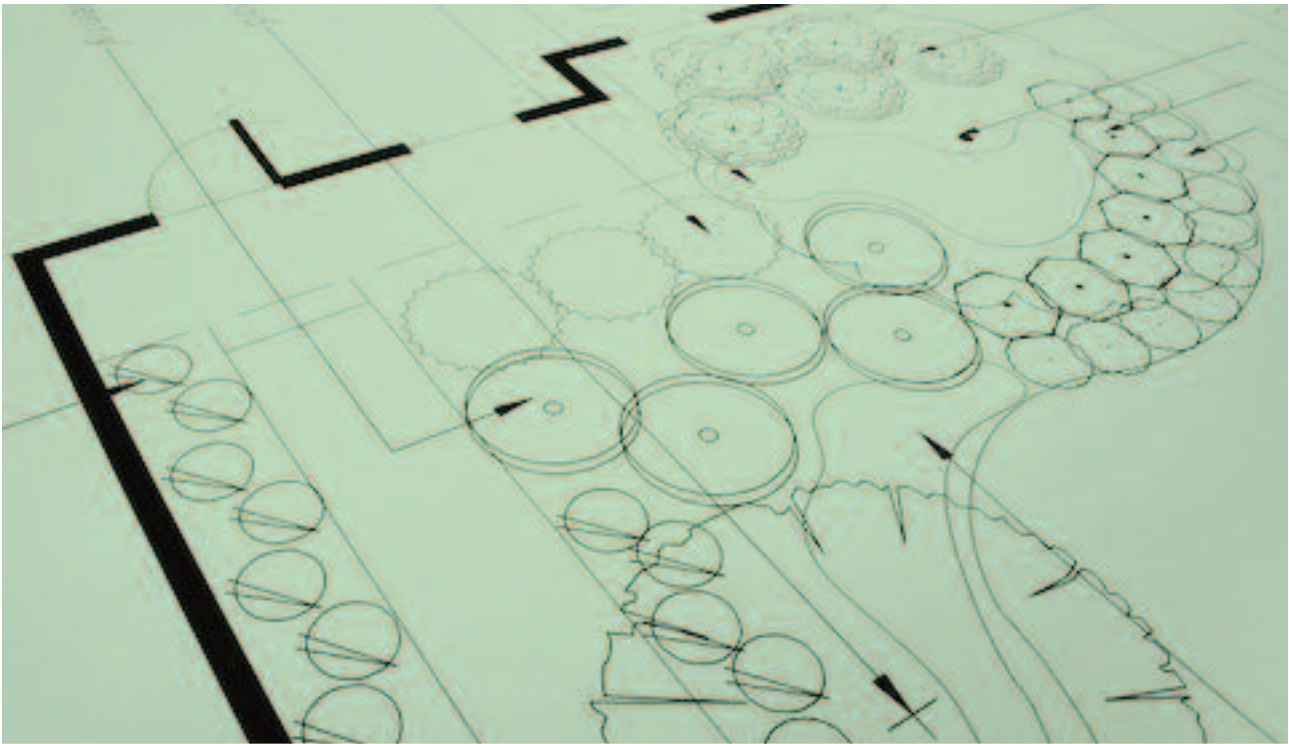
Water features and advice:

[Water features](#)
[Blog](#)



it's in our nature
Dobbies.com

Water feature plans



Plan your water feature thoroughly

While installing a water feature in your garden is not too difficult, it's not a project you can simply leap into without planning. Here are some questions you should consider before selecting a water feature.

What is the site like?

Are there any trees nearby? If so, you will have to be prepared to clear fallen twigs and leaves out of your feature to keep it running smoothly.

If you need to do any excavation for the water feature, are there any buried cables or pipes under the proposed site?

If the feature is going to have moving water, as with a fountain or waterfall, will

the sound reach your neighbours' house? Most people like the sound of running water, but not everyone wants to hear it round the clock!

If you're installing a spray fountain, it should be in an area protected from wind, unless you want water blown all over your garden.

Water features and advice:

[Water features Blog](#)



it's in our nature
Dobbies.com

Water feature plans continued

Do you have the power?

How much water will your planned feature include, and therefore how powerful a pump will you need? Is there an electric outlet nearby you can use, or will you need to contract an electrician to run a power line out to the site of the feature?

If you need to install extra plumbing or electrical lines to make your planned feature work, check with your local planning department first to ensure you stay in compliance with regulations.

Fish and/or plants?

Both fish and plants are attractive and have practical uses: fish help keep mosquitoes from breeding in still water, and plants help control algae and provide shade for fish. However, fish will need to be fed, while plants need sunlight and must be carefully monitored to keep them from growing out of control.

Is it safe?

Will there be children in the area? Children can drown in a few inches of water. If your feature is to include a pond or other area of still water that a small child might stumble into, you need to think about fencing, pond covers, or other safeguards. Alternatively, consider an elevated fountain that's above children's reach.

What about maintenance?

Can you perform the necessary maintenance? Water features are not install-and-forget items. You will need to make sure the water remains clear, add chemicals if necessary, check the pump and filter periodically, clean out any debris and protect the feature in cold months.

And, finally, how does the feature fit in with the rest of your garden? Does its style, colour, and proportion complement what you already have there?



[Kelkay Trickling Urns & Cask](#)
£179.99



[Henri Studio Medium Rockfall Fountain](#)
£769.00

Water features and advice:

[Water features Blog](#)

How to make a water feature



Make your own water feature.

There are many sorts of water features available from a humble small-scale fountain or waterfall for your pond to stand-alone pebble fountains or large-scale sheets of glass with cascading curtains of water.

However, remember that all running water features need a power source – and water and electricity can be a deadly combination, so use a qualified electrician to install your chosen design.

Visit your garden centre or nursery for ideas, or look out for the range of contemporary water features on display at garden shows.

How to create a pebble fountain

- Dig a circular hole about 1m in diameter and 60cm deep.
- Line with sand and place a square of thick felt or carpet in the centre.
- Cover with a butyl liner.
- Build a square central tower for the pond pump three bricks high and one brick wide.
- At this point consider how and where you will run the pump power cable. You may need to leave a hole or cut a channel.



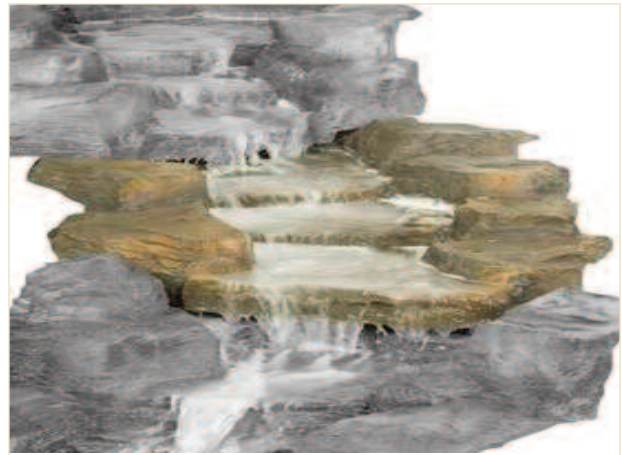
it's in our nature
Dobbies.com

How to make a water feature continued

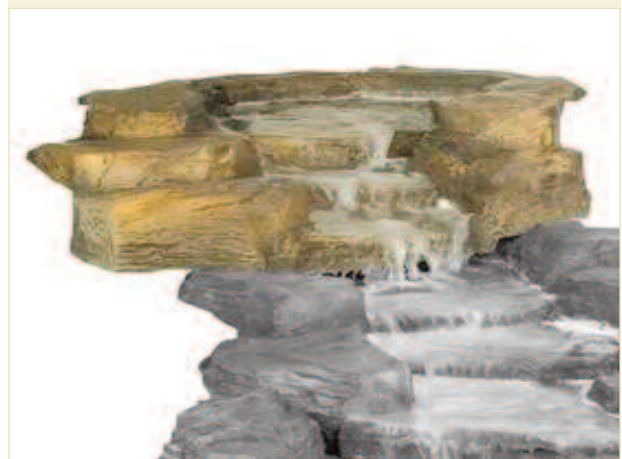
- Cement the bricks together and cover with galvanised wire mesh.
- Place the pump on top of the mesh and surround with another layer of bricks.
- Fill the pool with water and test the pump.
- Lay a galvanised wire mesh grill over the top of the hole.
- Cover with larger bricks and stones, then top with colourful and interesting pebbles.
- Sit back and enjoy your unique water feature.



[Rockways Slate Rapid Poly Small Stream](#)
£95.00



[Rockways Slate Water Cascade Right Bend](#)
£109.00



[Rockways Slate Water Cascade Left Bend](#)
£109.00



[Rockways Slate Water Cascade Drop](#)
£109.00

Water features and advice:

[Water features](#)
[Blog](#)



Garden Fountains



Fountains add charm and sparkle to your garden.

A fountain can add charm to any garden, large or small. The sight and sound of running water pleases the senses and calms the nerves. In cities, a fountain can help shut out the noises of people and traffic, and fountains tend to attract birds, further adding to the pleasures of your garden.

All shapes and styles

The word 'fountain' may conjure images of massive stone installations suitable only for wealthy homes, with heroic statues and jets of water spraying everywhere, but fountains come in all kinds of shapes and sizes to fit any garden. If space is tight, you can get an attractive wall fountain, or even one that fits on a tabletop. And your fountain doesn't have to look like

something plucked out of a Roman ruin. Whether your taste runs to sleek and geometric, organic and natural, Asian style or unusual and eye-catching, you can now find a fountain to match.

Fountains can come in many different materials to go with the existing look of your garden. Stone or concrete are of course traditional for fountains, but you have other options. Fibreglass can be almost indistinguishable from stone to the eye, and much cheaper and easier to handle. Copper fountains can look stunning, especially as they weather.



it's in our nature
Dobbies.com

Garden fountains continued

Location advice

Locating a fountain does require some study and research before you proceed. Look round your garden and see if you can find a spot that gets some sunshine (but not too much), is not directly beneath a tree (no one wants a fountain clogged with leaves), and has level ground (or at least ground you can make level with added soil and sand). And of course you want a spot where the fountain will be easily seen and will help enhance the look of your garden.

Installation

You might need to seek professional help if your fountain is not self-contained and requires an outside water supply, or if you need to install a new power line to run its pump. However, a fountain with a recirculating water supply and an integrated pump can be extremely simple to install - you need only put the fountain in place, make sure it is stable, connect the pump to the power and fill it with water to begin enjoying it.



[Henri Studio Classic Lion Fountain](#)
£650.00



[Henri Studio Grotto Falling Diamonds Fountain](#)
£399.00



[Henri Studio Three Tier Renaissance Fountain](#)
£749.00

Water features and advice:

[Water features](#)
[Blog](#)



it's in our nature
Dobbies.com

Garden waterfalls



Garden waterfalls are beautiful and practical.

If you're looking for a way to improve your garden, why not consider adding a waterfall?

Elegant and practical

The sparkle and splash of falling water adds a lively note and natural beauty to any garden. A waterfall also has practical use – it helps aerate ponds and water features, which is beneficial for fish and also helps prevent the growth of algae.

To find the pump and waterfall size best suited to your pond or water feature, go online and search for a waterfall weir chart, which will tell you how large a waterfall you should consider based on your water feature's volume.

Build your own

You can build your own waterfall. Dig out either a straight course or a series of linked basins or pools, as you see fit, and line it with clay, concrete, or pond liner over a layer of padding. Install projecting flat stones at points along the course or at the outlet of each basin, in order to create the waterfall effect.

Then sink a pump into the deepest part of the pond, and run a supply hose up from the pump to the highest part of the course. Once you start the pump, you will likely find it necessary to adjust the flat stones until you achieve the effect you desire. achievement and addition to your garden.



it's in our nature
Dobbies.com

Contemporary water features



Contemporary water features have a sleek and clean style.

If you're planning to add a water feature to your garden, you will obviously want one that matches your taste perfectly.

While most fountains and waterfalls have a classical or old-fashioned style, you need not feel constrained if you favour a more modern look. There are many options available for contemporary water features.

Sleek and chic

Contemporary water features are distinguished by a sleek and clean style, featuring such materials as cast stone, slate, granite, copper, stainless steel or glass. They tend to be low-flow, emphasising the natural beauty of the wet stone and the ever-changing ripples as the water flows across. Although less 'showy'

than traditional fountains, they can be just as striking.

A good example of a contemporary water feature is Henri Studios' Astor Fountain, with its smooth cast stone finish and sharply defined geometric angles, and a touch of naturalism in the rough edges of the fountain column. Its oriental style draws the eye and contrasts with the soft, constant flow of water over the starkly outlined stone.

Water features and advice:

[Water features Blog](#)



it's in our nature
Dobbies.com

Contemporary water features continued

Modern twist

Contemporary style does not have to mean severe. Henri Studios' Birds of a Feather design offers a new spin on the traditional birdbath, with rounded, almost organic shapes and gently flowing water for a calm, peaceful look. The simplicity of the design is counterpointed by the little sculpted birds round the edge of the basin.

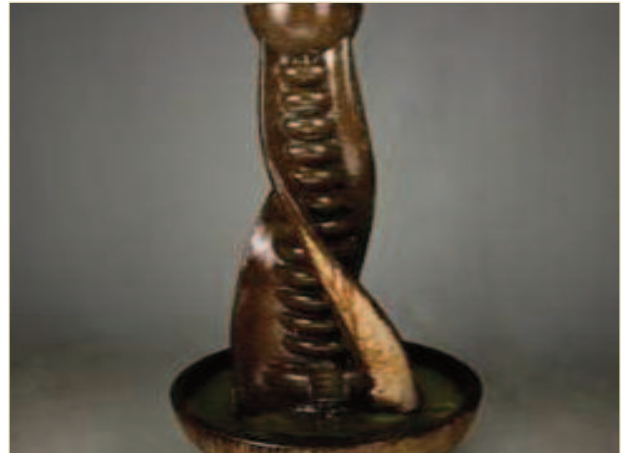
Stylish spiral

Another example of an unusual, yet still contemporary, water feature is Henri Studios' Spiral Fountain. Its whirling shapes raise the eye upward to watch as the water overflows from the top basin and runs down to the bottom. It can serve as an eye-catching centrepiece for a small modern-style garden.

No matter what your requirements, you should be able to find a contemporary water feature to match them. Take the time to do your research, consider your garden's overall look, and you'll be sure to find a water feature to complement your style.



[Henri Studio Overflowing Spill Dish Fountain](#)
£369.00



[Henri Studio Helix Fountain](#)
£399.00



[Henri Studio Astor Fountain](#)
£289.00

Water features and advice:

[Water features](#)

[Blog](#)



it's in our nature
Dobbies.com

Indoor water features



Indoor water features create a sense of tranquility.

Who said water features are only for outdoors?

Adding a statement water feature to your conservatory or balcony creates an exotic hot-house look. The ripples and trickles of water create a soothing ambiance to relax in, bringing the feeling of outdoors in.

The conservatory makes a perfect home for water features and aquariums. Moody, subtly lit fountains help create a cosy atmosphere at night. Simply gazing at water falling over smooth stones can prove to be quite therapeutic.

Most indoor water features come as a self-contained unit. So there's no digging holes, running power cables or cleaning leaves out of the water. Just plug it in and relax.



[Henri Studio Birds Of A Feather Fountain](#)
£229.00

Water features and advice:

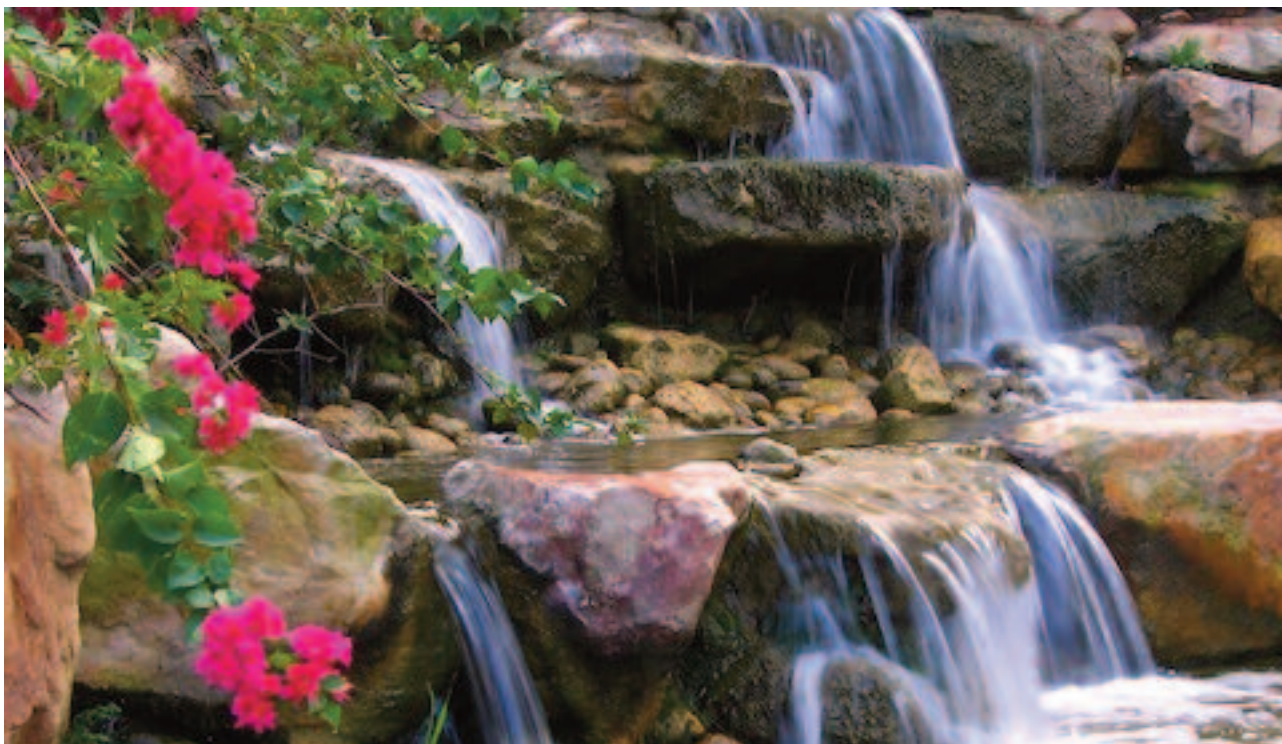
[Water features](#)

[Blog](#)



it's in our nature
Dobbies.com

Outdoor water features



Add a touch of distinction with an outdoor water feature.

Whether you're still designing your garden or want to add something new to enliven an existing plot, you can add an extra touch of distinction by incorporating a water feature.

The term 'water feature' encompasses a variety of installations that enhance your garden with the natural beauty of water.

Planning and preparation

While installing a water feature is not a minor undertaking, it's not always as difficult as it might seem at first. A lot of trouble can be avoided through thoughtful research and planning, and consultation with experts when necessary.

Water features do require maintenance to keep the water clean and clear, and you'll have to be prepared for extra work during the winter when the temperature could dip below freezing.

Perfect ponds

The most basic form of water feature is the simple garden pond, which can stand on its own or serve as a home for fish and water plants. Today's synthetic pond liners are easy to cut and handle, which means you can dig a pond in almost any shape and size you like to fit your garden's dimensions. You can make a pond even more elaborate and attractive by adding a waterfall.



it's in our nature
Dobbies.com

Outdoor water features continued

Fantastic fountains

A fountain can also be a beautiful addition to a garden and does not require a huge amount of space. A small fountain can serve as a centrepiece for any size of garden, and a wall-mounted version is especially economical with space.

Fountains are available in a wide variety of styles, from classical and quaint to more sleek, modern designs, so you can be certain of finding one that matches the theme of your garden and your taste.



Henri Studio Balancing Act Fountain
£299.00



Henri Studio Chalet Fountain
£459.00



Henri Studio Broken Pouring Jug Fountain
£149.00



Henri Studio New Small Contemporary Tier Fountain
£479.00

Water features and advice:

[Water features](#)

[Blog](#)



it's in our nature
Dobbies.com

Water feature pumps



Pumps are the heart of your water feature.

The pump is the heart of any garden water feature. It not only keeps the water in your feature in motion and aerated, it acts as a filter to keep it clean and looking as it should.

Get the power right

Your pump should be powerful enough to recirculate all the water in your feature at least once every two hours, and preferably once an hour. So for instance, if you have a 1500 litre pond, the absolute minimum you should consider is a 750 litre-per-hour pump. If your feature needs to move water upwards, as with a fountain or waterfall, you will need an even stronger pump to be able to counteract the effects of gravity. Waterfalls in particular need strong pumps, because of the large volume of

water required to keep the falls moving.

If you're in doubt, it's always better to err on the side of too much power, since you can always turn down the pump once you have it installed. If your feature is a fountain that includes jets of water, be sure your pump is not too powerful. If the jet goes too high, you'll lose a lot of water to the wind.

Water features and advice:

[Water features Blog](#)



it's in our nature
Dobbies.com

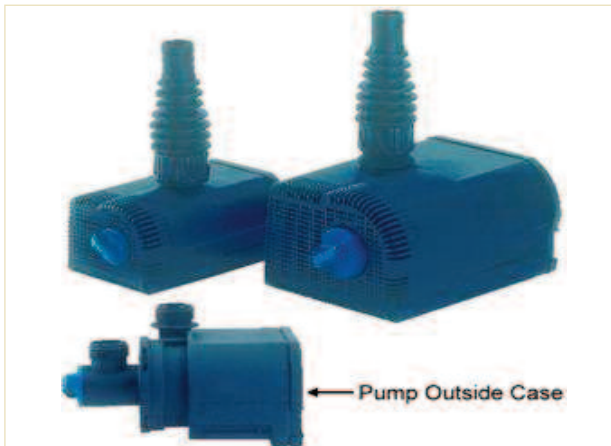
Water feature pumps continued

Call the professionals

Most pumps require a connection to mains power. This will often mean running a power line out to the location where you want to place the feature. This is NOT a DIY project - get a professional electrician to do it for you! Although some newer pumps do utilise lower-voltage power, which is safer for a non-electrician to handle, it's better to engage professional help if in any doubt.



Hagen Laguna Power Jet Free-Flo 2200 Fountain & Waterfall Pond Pump
£79.99



Oase Neptun 1000 Statuary Water Feature Pump
£43.99



Oase Neptun 440 Statuary Water Feature Pump
£34.99



Oase Aquamax Eco 12000 Pond Pump
£294.99

Water features and advice:

[Water features](#)

[Blog](#)



it's in our nature
Dobbies.com

Water feature care



Keep your water feature clean.

Most water features require very little maintenance and you can simply keep an eye on them as part of your overall garden care.

Here are a few water feature care tips. Stick to these and you'll not go wrong:

- Keep fountains topped up with clean water.
- Rainwater is the most natural water source to use and it helps prevent the build-up of limescale.
- Remove leaves and debris.
- Use anti-algae treatments if you see a build up of algae.

- Try to keep shallow still water basins and bird baths away from direct sunlight to minimise evaporation.



[Tetra Pond pH Test Kit](#)

£7.29



it's in our nature
Dobbies.com